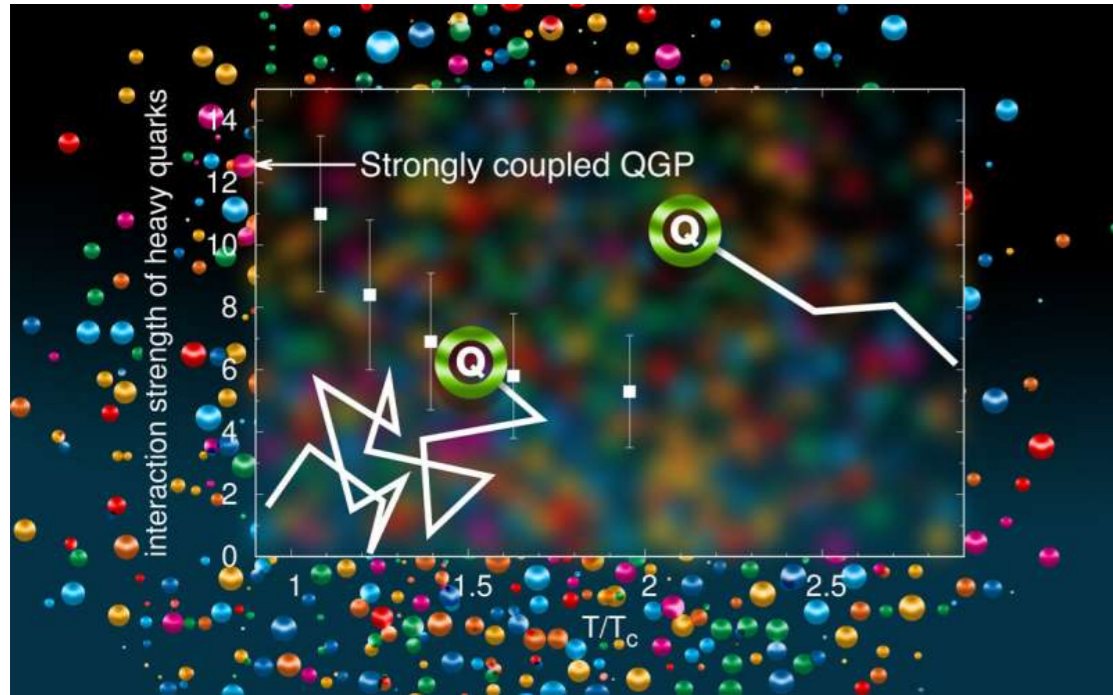


Rapid Thermalization of Heavy Quarks in Quark-Gluon Plasma



DOE SC Highlight:

Calculation shows why heavy quarks get caught up in the flow

[Phys.Rev.Lett. 132 \(2024\) 5, 051902](#) & [PHYS.ORG](#)

Accomplishment: First calculations of a transport coefficient, the heavy quark diffusion coefficient, for QCD with dynamical light quarks.

Methods: The SciDAC project provided all necessary software and algorithms.

Impact: Shows rapid thermalization of heavy quarks in QGP, and provide QCD input for sPHENIX and LHC heavy-ion experiments.